

Winterizing Your Backflow

Tools Needed: Flat Screwdriver, Pliers, Bucket

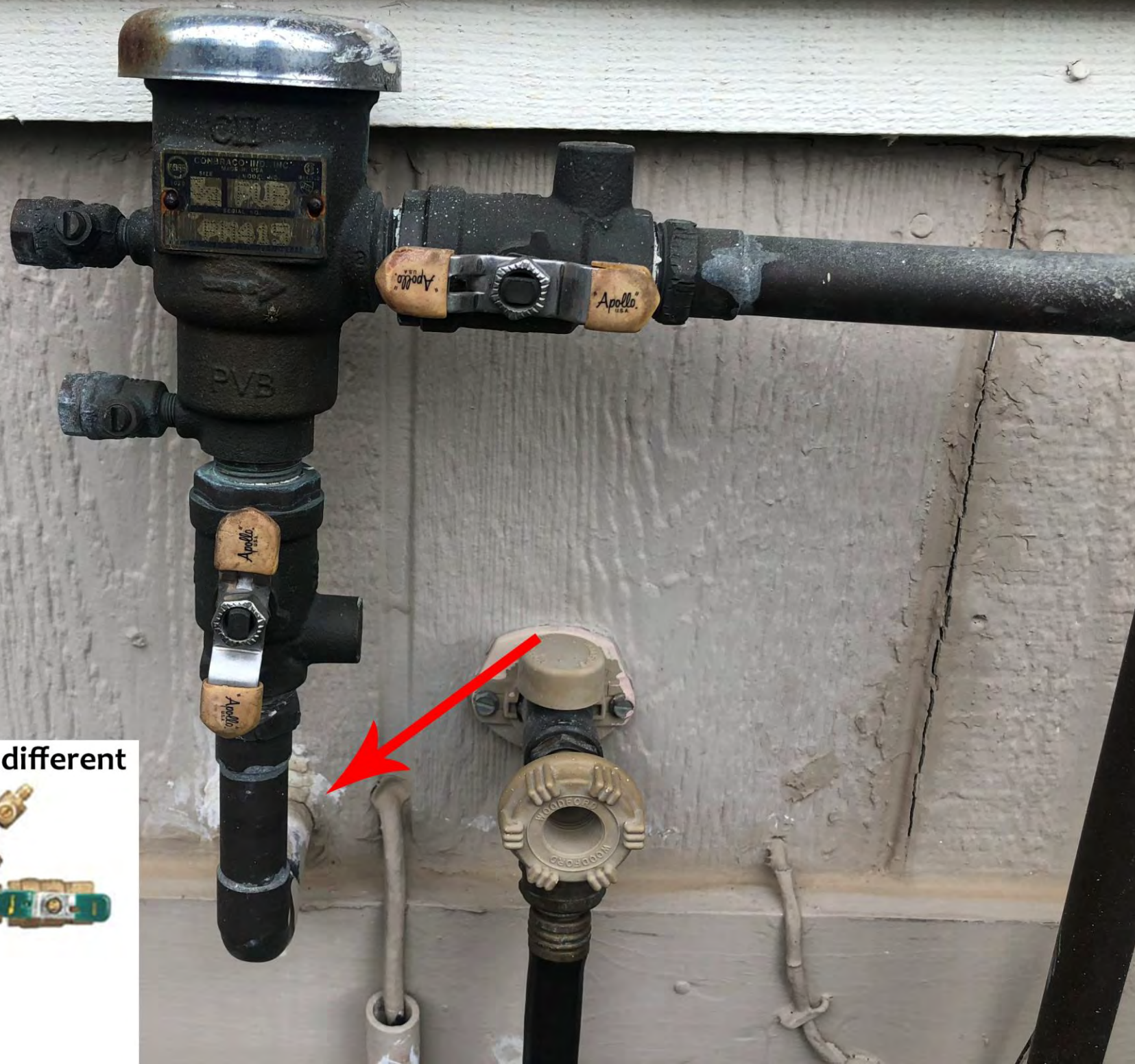
DIAMOND
IRRIGATION



402-216-9875

Step 1

Locate your backflow and determine where it enters your home. This will allow you to find the water shutoff once you are back inside.

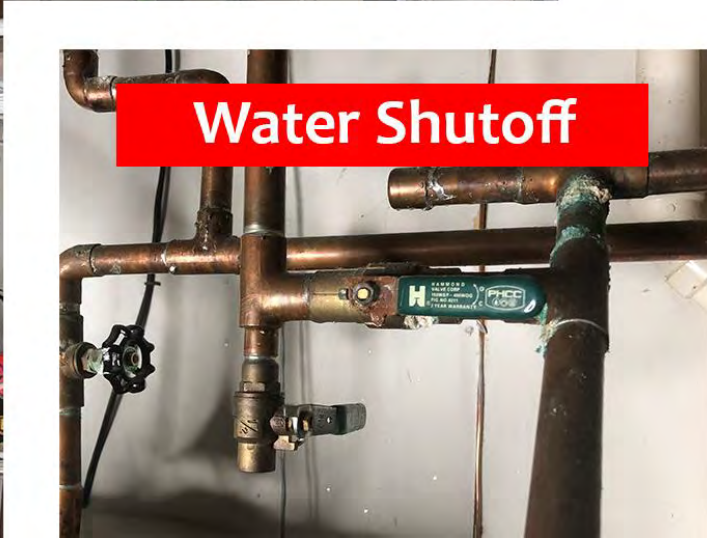
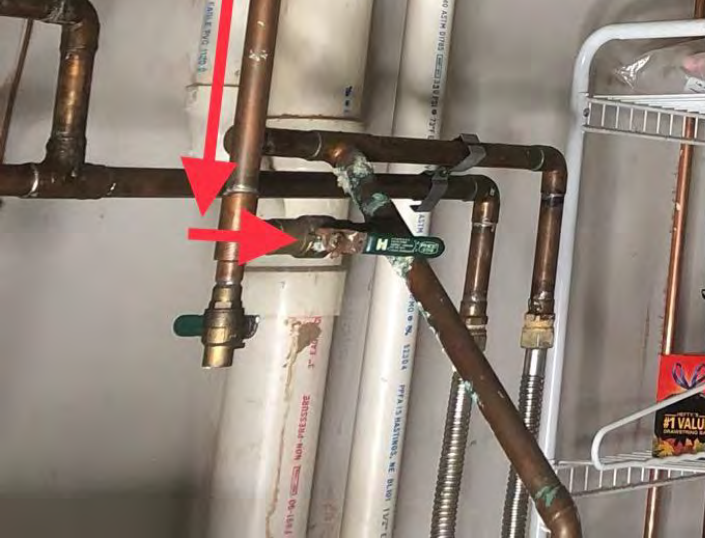


Some may look slightly different



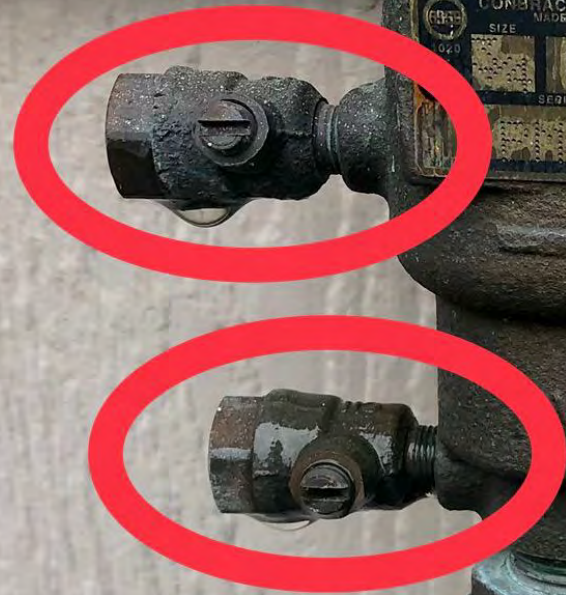
Step 2

Follow the backflow pipe inside of your home until you come to the water shutoff handle. Turn the handle perpendicular to the pipe to shut the water off to your sprinklers.



Step 3

Return to your backflow and open ALL bleeder valves by turning the groove in the bleeder screw in-line with the valve. Some may have more than 2, you need to open ALL valves. If you don't see the bleeder screw it may be on the backside of valve.



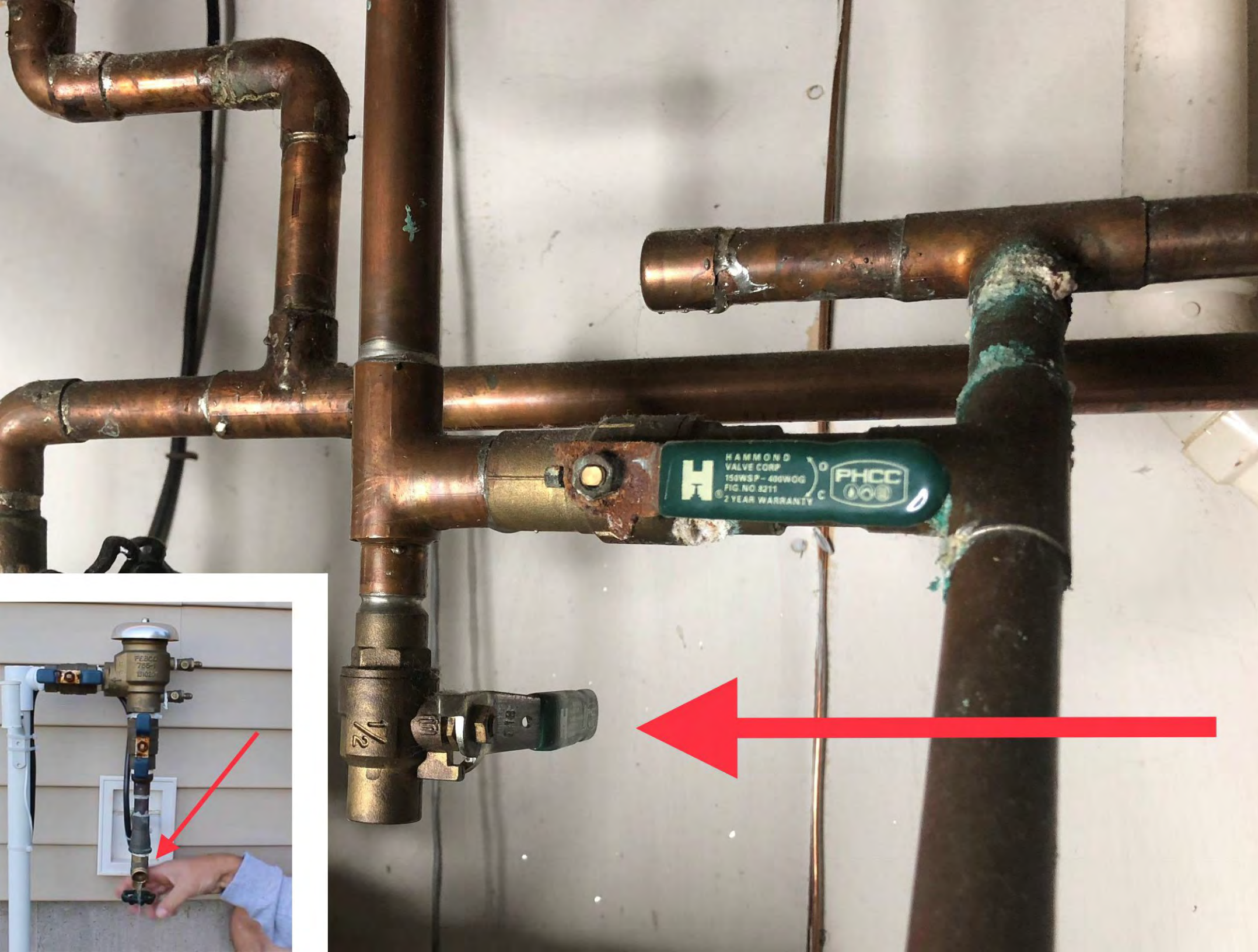
Some backflows may have more than 2



Turn ALL bleeder screw grooves in-line with bleeder valves

Step 4

Locate the drain for your backflow. Some will be inside on the same pipe as the water shutoff and some will be outside on back flow itself. It will either be a handle or a wheel and will have an open end that's not connected to other pipes.



Step 5

Place a bucket below your drain and open drain by turning handle in-line with drain or by turning wheel all the way to the left.

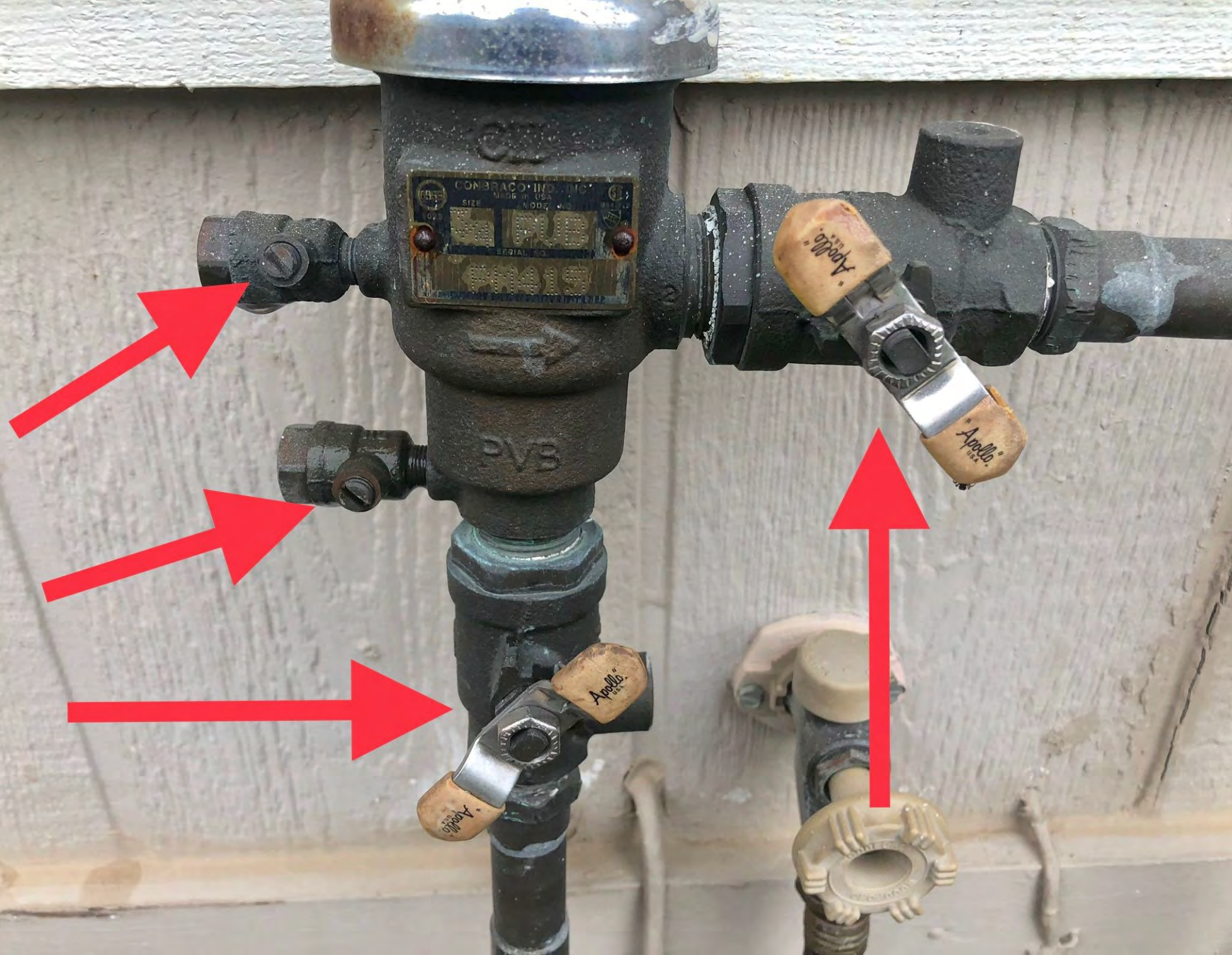
Once all water has been drained leave drain half open by turning handle to 45 degree position or by turning wheel halfway between open and close.



Leave drain handle at 45 degrees or drain wheel half way open once all water has been drained.

Step 6

Return to the backflow and turn ALL bleeder screws so the grooves are at 45 degrees to the valve and ALL backflow handles so that they are at 45 degrees to the pipes. Some backflows may have more than 2 bleeder screws and more than 2 handles. Turn ALL



Step 7

Unplug your control clock and that's it!

Your system is now protected from early overnight freezes and is ready to be blown out to ensure that it survives the deep freeze of winter.



Recap

- Shut off water to system.
- Open ALL bleeder screws on backflow.
- Open drain and ensure that ALL water is drained from backflow.
- Turn drain handle/wheel so that drain is left halfway open.
- Turn ALL bleeder screws and backflow handles so that they are left halfway open.
- Unplug sprinkler clock



402-216-9875